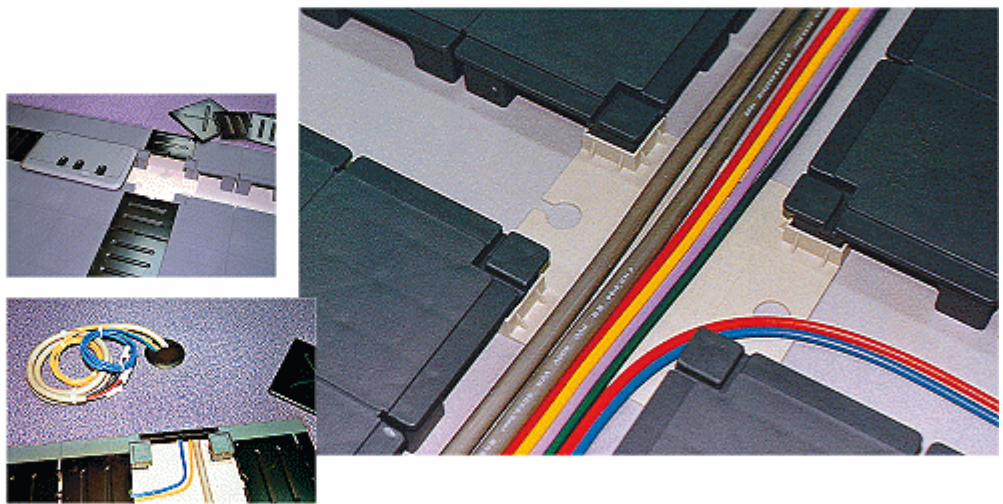


**NETFLOR®**

**User Friendly  
& Environment Friendly**



**ECO series**

CA600R  
CA500R  
CA400R

Cable Management

Flooring Systems

## ECO CA-600R / CA-500R / CA-400R

**ECO Series** is the most popular and one of the best sellers among Netfloor family. The system has been widely using in all general public areas such as office, school, call center, training classroom..., for new premises as well as for renovation and upgrading.

### ---- Environment Friendly and Cost Effectively -----

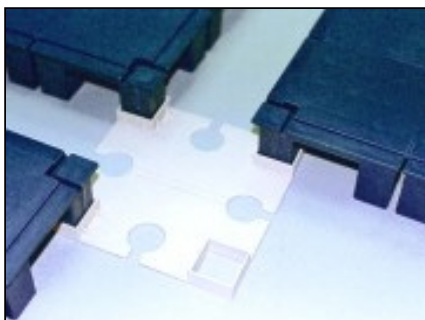
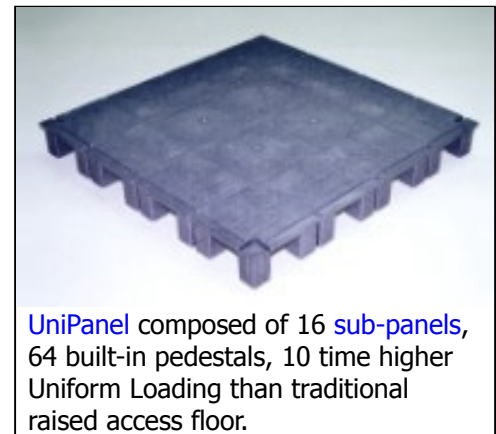
#### I. Environment Friendly -- recycled and 100% recyclable

**Environmental Friendly** is core concept of Netfloor product family. **ECO series** meet high standard as Green Building Materials. **UniPanel** (main panel) is made of recycled polypropylene and main components of **ECO series** are 100 % recyclable. The system has been approved and **ECO Mark** listed in Japan.

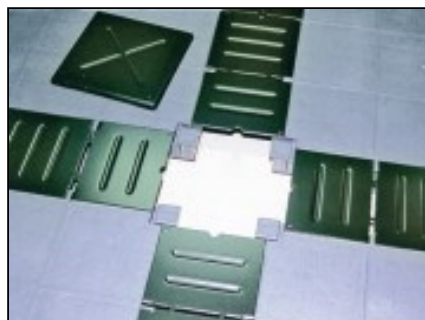
#### II. Simplicity --

##### Interlocking and fully accessible Cable Trenches

Reticulated 90 mm in width, four-way grid-pattern **Cable Trenches** are formed every 600 mm (24") on center. Steel Cable Trench Caps, **Central Cap** and **Flank Cap**, are easily installed, just laid by hand, to cover the Cable Trenches. The fully accessible **Cable Trench Caps** are designed to firmly installed on **UniPanel**, and securely protecting running cables inside the Cable Trenches. All main components, **UniPanel**, **Cable Trench Caps**, **Base Connector** are interchangeable.



4-way **Base Connector** to connect corner foot of **UniPanel** (main panel). Reticulated, grid-form **Cable Trenches** formed automatically.



Both **Central Cap** and **Flank Cap** are fully accessible, interchangeable. Users can lift the caps easily without using of special tools.



Continuous interlocking process to lay **UniPanels** on the floor. It follows the floor contour. No leveling is needed.

**ECO series**

### III. Retain the ceiling height

System heights 40 mm ~ 60 mm, retain ceiling height and provide high cable capacity

	System Height	Cable Trench Width	Cable Trench Clearance
CA-600R	60 mm (2.36")	90 mm (3.54")	55 mm (2.16")
CA-500R	50 mm (1.97")	90 mm (3.54")	45 mm (1.77")
CA-400R	40 mm (1.57")	90 mm (3.54")	35 mm (1.37")

### IV. Quick Installation, Least Interference

Professional performance installation can be completed by trained contract installers as well as amateurs. In case of renovations, installation may be proceeded room by room or area by area. Full height dry wall or de-mountable partition shall be erected on top of the system. Partitions will not interrupt cable distribution.



Half-height partition on ECO series power, data, voice cables distributing under the floor, neat and no limitation.

### V. Cost Effective

**Labor saving:** only 1/2 installation labor time to conventional raised floor. One installer can complete 70 to 90 sq. meters (750 ~ 950 SF) per working day.

**Low initial cost:** 2/3 materials costs and half labor costs comparing to traditional raised access floor.

**Low maintenance costs:** Maintenance costs of the ECO series can be ignored.

#### 100 % reusable

In case of renovation or re-location, all main components, except sound attenuation blanket, can be moved easily and which are 100 % reusable.



Full height partition erected on top, by fastening floor track to the UniPanel.

### VI. Users Friendly -- Free extension of cables through any Flank Cap

#### Accessibility

Cables are free extension through cable trenches, to extend and connect to open office low partition, full partition, workstation, desk's top, by just replacing the Flank Cap with Exit-Cap (Flank Cap with 60 mm diameter opening).

Lifting and replacing of Trench Caps are very easy, just by hand and/or simple tool like screwdriver, without help of special tools or call for professional installers.



In case the partition lays on Cable Trench, drill at floor track and steel trench cap, fasten by < 15 mm length self drilling screw.

## Accommodation

Accommodate all types of workstation, half-height / full-height partitions

1. Routing cables from any point of **Cable Trench** to extend through **Exit-Cap** to extend to partition, wall base, desk top, or workstation.



Cables extend through **Exit-Cap** and grommet.



Extension through **Exit-Cap** to desk top or workstation.



Extension through **Exit-Cap** to full or half height partition.

2. Service box installed at **Cable Trench** by just replacing one Flank Cap. Cables extended from Cable Trench to connect at service box.



**SB603** accommodates 2 X 110 volts power sockets and 3 X Cat. 5 or Cat. 6 data jacks.  
**SB403** accommodates 2 X 110 volts power sockets and 2 X Cat. 5 or Cat. 6 data jacks.

3. Surface floor coverings: commercial rate carpet tile or vinyl tile.



Commercial rate vinyl tile minimum 4.5 mm thick is suitable as surface floor covering for ECO series, as an alternative to carpet tile.

## Main Components

<p><b>UniPanel</b> (main panel)  <b>CA-611R</b>: 60 mm high  <b>CA-511R</b>: 50 mm high  <b>CA-411R</b>: 40 mm high            Size: 510 mm X 510 mm</p>	<p><b>Central Cap</b>  <b>CA414R</b>            Size: 148 X 148 mm</p>	<p><b>Base Connector</b>  <b>CA-415 / AD615</b>            Size: 169 mm X 169 mm</p>	<p><b>Flank Cap</b>  <b>AD613R</b>            Size: 223 mm X 125 mm</p>

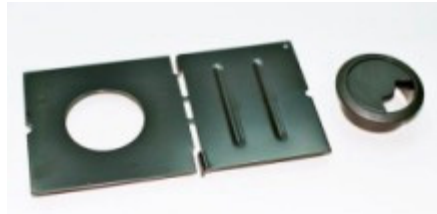
**ECO series**

**Accessories -----**

Sound Attenuation Blanket AD-311  
2 mm thick PE foam, 1 meter width

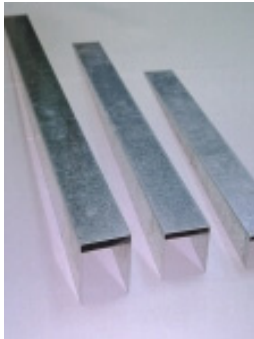


Exit-Cap & Grommet  
AD613-D60 & AD-518

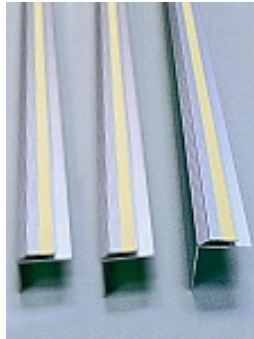


Install at Cable Trench by replacing Flank Cap

Steel Ramp, Aluminum Ramp Rail and Aluminum Free Standing



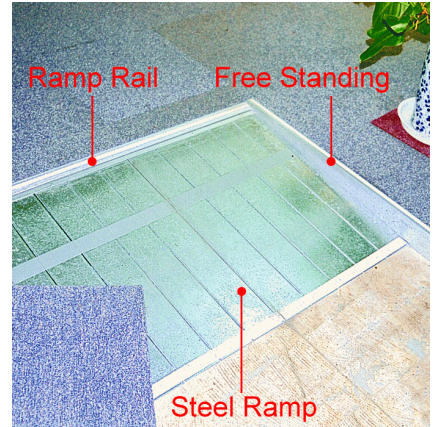
Ramp  
AD625: 60 mm high  
AD525: 50 mm high  
CA425: 40 mm high



Free Standing  
AD621: 60 mm high  
AD521: 50 mm high  
CA421: 40 mm high



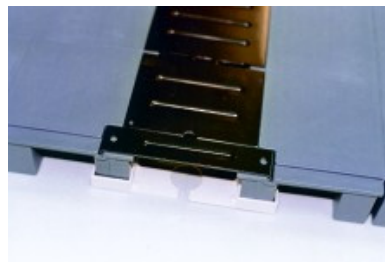
Ramp Rail  
AD326



Starting Cap: To install at starting row



Starting Cap CA428



to conceal gaps at the beginning of Cable Trenches

Edge Rail for less than 8 cm residual

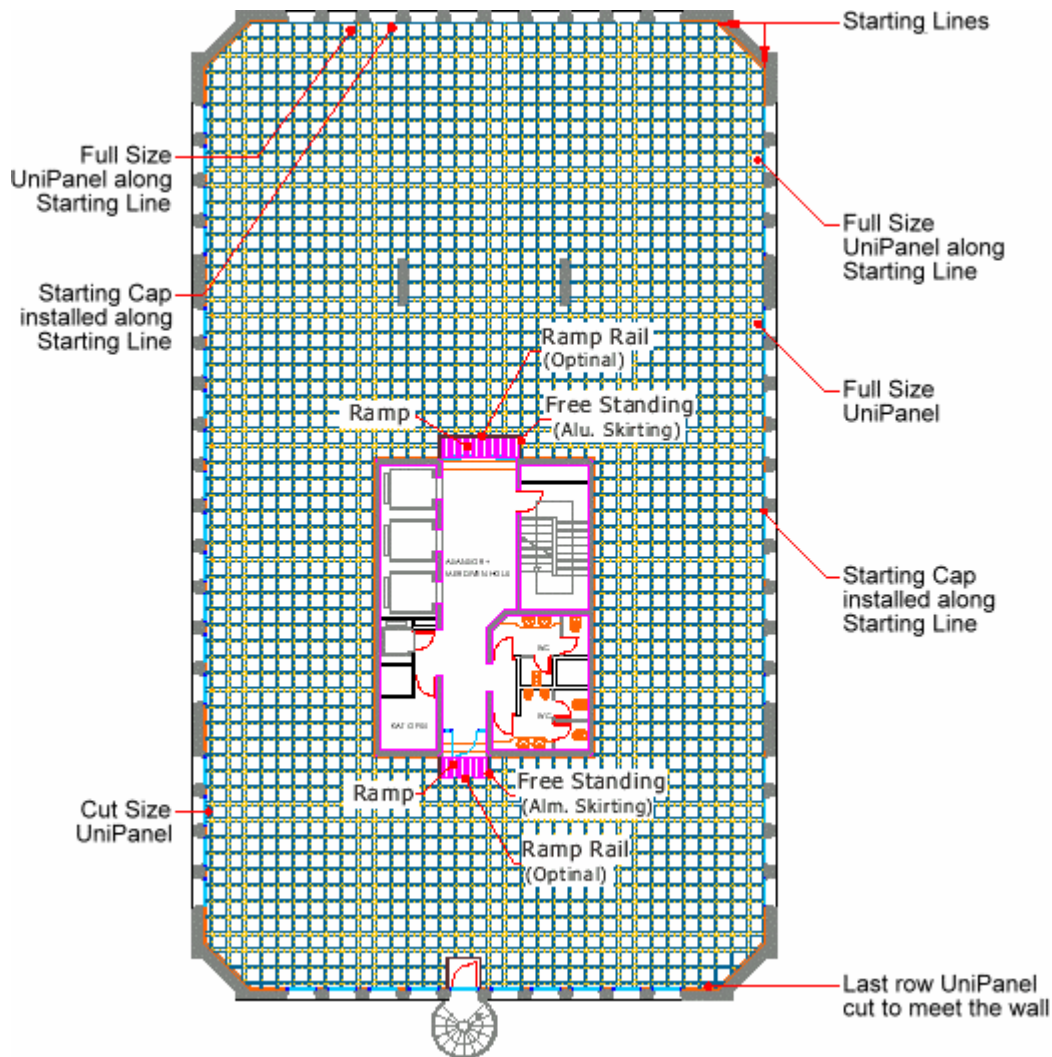


AD623: Edge Rail 60 mm high  
AD523: Edge Rail 50 mm high  
CA423: Edge Rail 40 mm high

## Installation Floor Plan

Installation of ECO series is easy, quick and cost effective on materials and labors. Following are basic procedure for floor plan recommended in most of the cases. As a matter of fact, the system itself enables Netfloor installers often invent smarter solution during installation.

1. Select two longest right angle walls as starting lines for first rows full size UniPanel.
2. First step, apply Sound Attenuation Blanket.
3. Then, plan the first piece UniPanel at the right angle or recess to measure the 2 starting lines as shown at the drawing below. Connecting first row UniPanel by half-size Base Connector along the starting walls. Allow 2 mm allowance between UniPanel and wall in order to avoid squeeze due to deviation of the wall.
4. Continuous connection of UniPanel by Base Connector is simple and quick. Steel Trench Cap may be installed before or after routing of cables.
5. Ramps and perimeters installation plan shown at drawing below.



# Specifications

ECO series consists of [UniPanel](#) (main panel), [Base Connector](#), [Central Cap](#), [Flank Cap](#), Ramp, Sound Attenuation Blanket and all necessary accessories. System when assembly is suitable for used in general office buildings and schools, except areas designed for fire escape or lifts.

**Module:** 600 mm X 600 mm (24" X 24")

System	CA-600R	CA-500R	CA-400R
Height	60 mm (2.36")	50 mm (1.97")	40 mm (1.57")
Cable Trench width	90 mm (3.54")	90 mm (3.54")	90 mm (3.54")
Cable Trench Clearance	55 mm (2.16")	45 mm (1.77")	35 mm (1.37")

### Main Components:

**UniPanel:** made of fire retard, recycled polypropylene  
**CA-611R:** size 510 x 510 x 60 mm (20.08" x 20.08" x 2.36")  
**CA-511R:** size 510 x 510 x 50 mm (20.08" x 20.08" x 1.97")  
**CA-411R:** size 510 x 510 x 40 mm (20.08" x 20.08" x 1.57")

### Base Connector:

Size 169 mm X 169 mm X 15 mm (6.65" X 6.65" X 0.59")  
 Made of recycled polycarbonate plus ABS

**Central Cap:** Size 148 mm X 148 mm (5.82" X 5.82")  
 2.3 mm (0.09") thick steel, re-enforced ribs  
 corrosion resistance treatment by electro-deposition, black

**Flank Cap:** Size 223 mm X 119.7 mm (8.78" X 4.71")  
 2.3 mm (0.09") thick steel, re-enforced ribs  
 corrosion resistance treatment by electro-deposition, black

**Sound Attenuation Blanket:** 2.0 mm (0.08") thickness

### Accessories

[Ramp](#), [Starting Cap](#), [Edge Rail](#), Alum. [Ramp Rail](#), Alum. [Free Standing](#), [Exit-Cap](#), [Edge Trimmer](#), etc., to support quick and efficient installation by least cutting at perimeters.

### Surface floor covering:

on top of ECO series  
 Commercial carpet tile: such as Milliken, Interface, Burmatex, ...  
 Commercial rate vinyl tile: thickness > 4.0 mm  
 Hard floorings such as marble, granite, wood, are not suitable.

Patent granted

Japan: Utility Model No. 3032638  
 Australia: Invention Patent No. 679415  
 France: Invention Patent No. 97 99 255  
 Taiwan: Invention Patent No. 127700  
 South Africa: Invention Patent No. 97/020

USA: Invention Patent No. 5.630.300  
 Germany: Utility Model No. 29520105.5  
 U.K. Invention Patent No. 2309042  
 China: Utility Model No. ZL 02 2 91689X  
 Patent pending: All other industrial nations

## Tests

### Fire Retard

**UniPanel:** Meet NFPA 253 Class A rating as test in Accordance With ASTM E-648 Critical Radiant Flux. Meet BS 476, Part 7, B2

**Central Cap:** non-combustible

**Flank Cap:** non-combustible

### Concentration Load:

Test in accordance with ASTM-E196 (2" plate)  
**UniPanel CA611R:** 400 kg < 2.5 mm depression  
**UniPanel CA511R:** 360 kg < 2.5 mm depression  
**UniPanel CA411R:** 360 kg < 2.5 mm depression  
**Central Cap:** 300 kg < 2.0 mm depression  
**Flank Cap:** 300 kg < 2.0 mm depression

### Concentration Ultimate Load:

CA-611R **UniPanel** > 700 kg  
 CA-511R **UniPanel** > 600 kg  
 CA-411R **UniPanel** > 600 kg

### Uniform Ultimate Load:

CA-611R **UniPanel** > 200 psi  
 CA-511R **UniPanel** > 150 psi  
 CA-411R **UniPanel** > 150 psi

**Warranty:** 5 years warranty (except when product is subject to abuse, negligence, abnormal use and not under Netfloor's installation instruction)

**In pursuing of quality improvement, the manufacturer reserves the rights to vary specifications without prior notice.**

## City Re-development -- "Netfloor inside"

--- Accommodate all types of office layout ---



Ba-Fu Building in Taipei downtown built 1929 and rebuilt 2003. The new modern 14 floors office building successfully reincarnated original 3-story Baroque facade.

ECO series continuously installed 5,000 sq. meters inside all building.



Full-height partition on ECO series



Cable routing --



Half-height open office workstation on ECO series--



ECO series accommodate all type of office layout

visit us at  
[www.net-floor.com](http://www.net-floor.com)



Copyright Netfloor, Inc. Printed Mar. 2007